

C>ONSTRUCTOR
UNIVERSITY



Geology & Planetary Mapping
Winter School

GMAP Jupyter-Hub

Carlos Brandt

eur  **PLANET 2024**
Research Infrastructure

This project has received funding from the European Union's Horizon 2020 research and innovation programme under grant agreement No 871149.





Roadmap

- What is Jupyter (Notebook/Lab/Hub)?
- Planetary Data Science Environment
- GMAP JupyterHub





Source document

- [github.com/europlanet-gmap:
/winter-school-2023
/gmap-tools
/GMAP_WS_2023_JupyterHub.md](https://github.com/europlanet-gmap/winter-school-2023/gmap-tools/GMAP_WS_2023_JupyterHub.md)





Jupyter *what?!*

Jupyter (software) provides high-level programming interface mixing interactive coding with online documentation

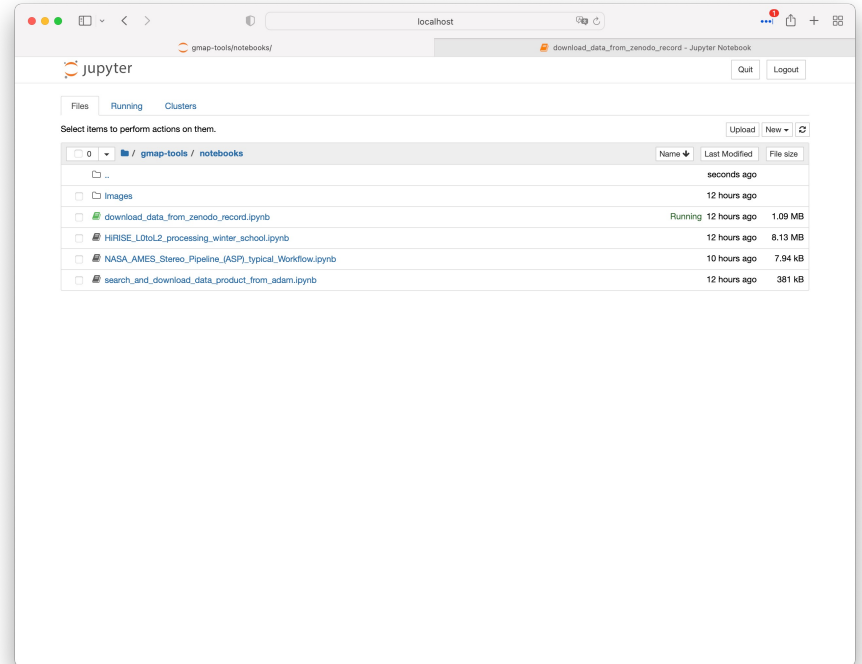
- Python (primarily), command-line
- Markdown





Jupyter *what?!*

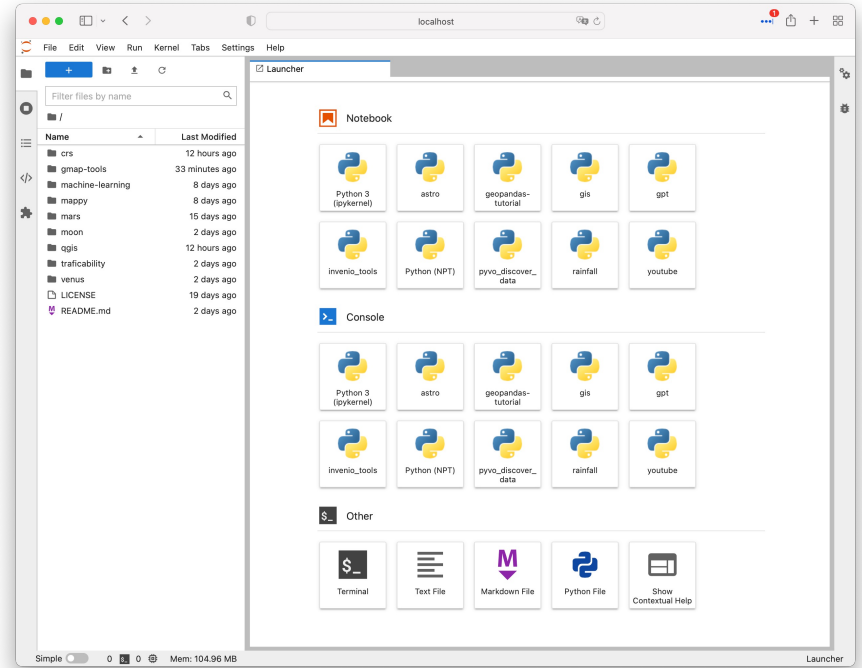
- Notebook
- Lab
- Hub





- Notebook
- Lab
- Hub

Jupyter *what?!*





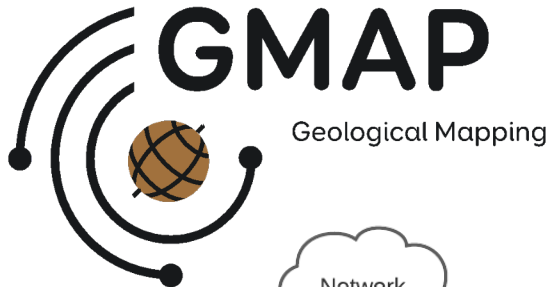
Jupyter *what?!*

- Notebook
- Lab
- Hub: manages multiple user and instances of *notebooks* (Notebook, Lab).

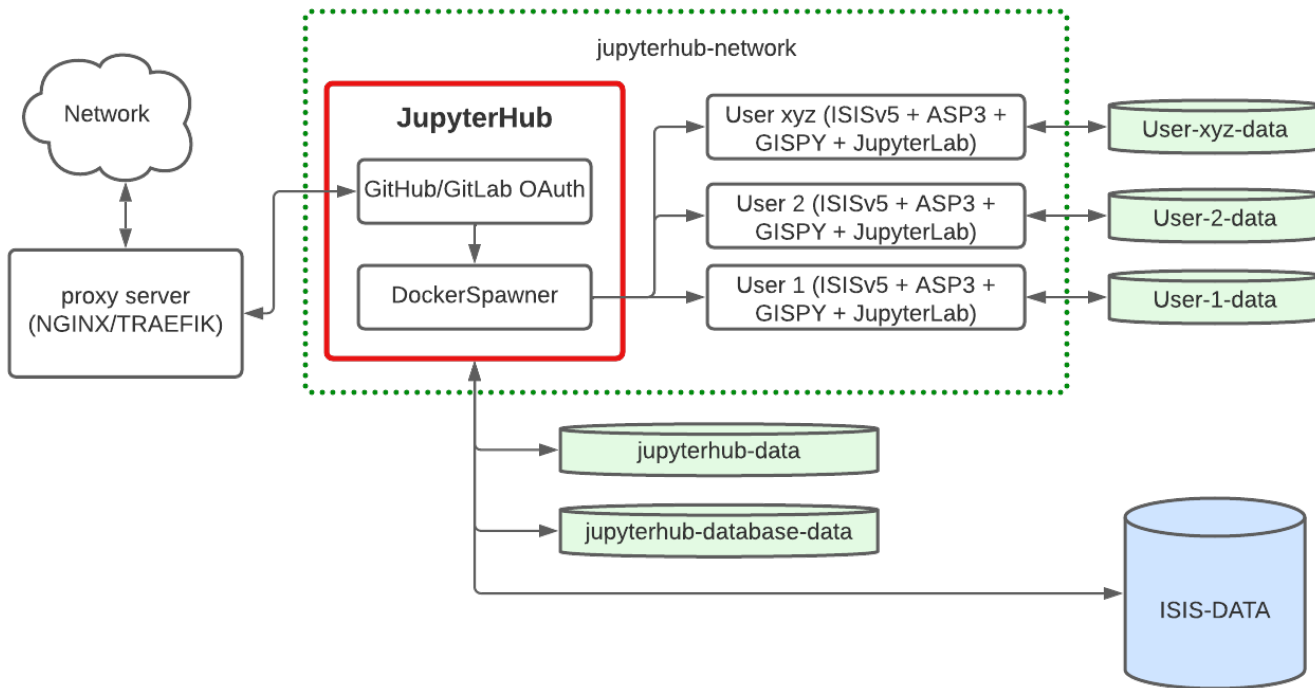


Planetary data science environment

- Interactive: [QGIS](#)
- Programmatic:
 - [GDAL](#)
 - [ISIS/ASP](#)
 - Python+GIS libraries



GMAP JupyterHub





GMAP JupyterHub

- jupyter.europlanet-gmap.eu
- github.com/europlanet-gmap/docker-isis3





Closure

For more details and full-text:

- [github.com/europlanet-gmap:
/winter-school-2023
/gmap-tools
/GMAP_WS_2023_JupyterHub.md](https://github.com/europlanet-gmap/winter-school-2023)

