

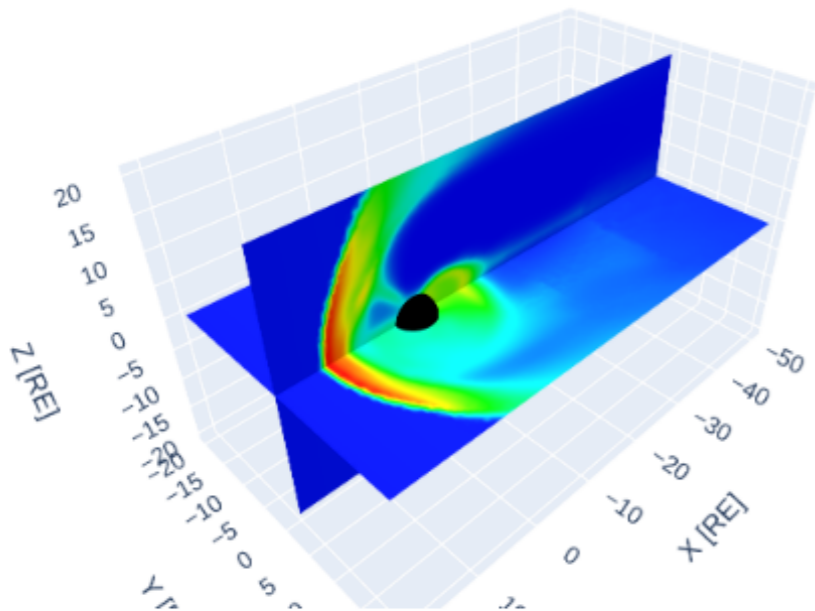
Kamodo Overview

- Kamodo is an official NASA open source project.
 - Git repository: <https://github.com/nasa/Kamodo>
 - Documentation: <https://ccmc.gsfc.nasa.gov/Kamodo>
 - Web demo: <https://ccmc.gsfc.nasa.gov/Kamodo/demo>
- Exposing relevant variables within a model or data source as Kamodo objects is called “Kamodofication”. This requires:
 - Model data accessibility from Python
 - A Python interpolating function for each variable
 - Proper Metadata and variable naming conventions
- Most of the development thus far has been through the Community Coordinated Modeling Center (CCMC) at NASA. We are encouraging broader project involvement from the community.

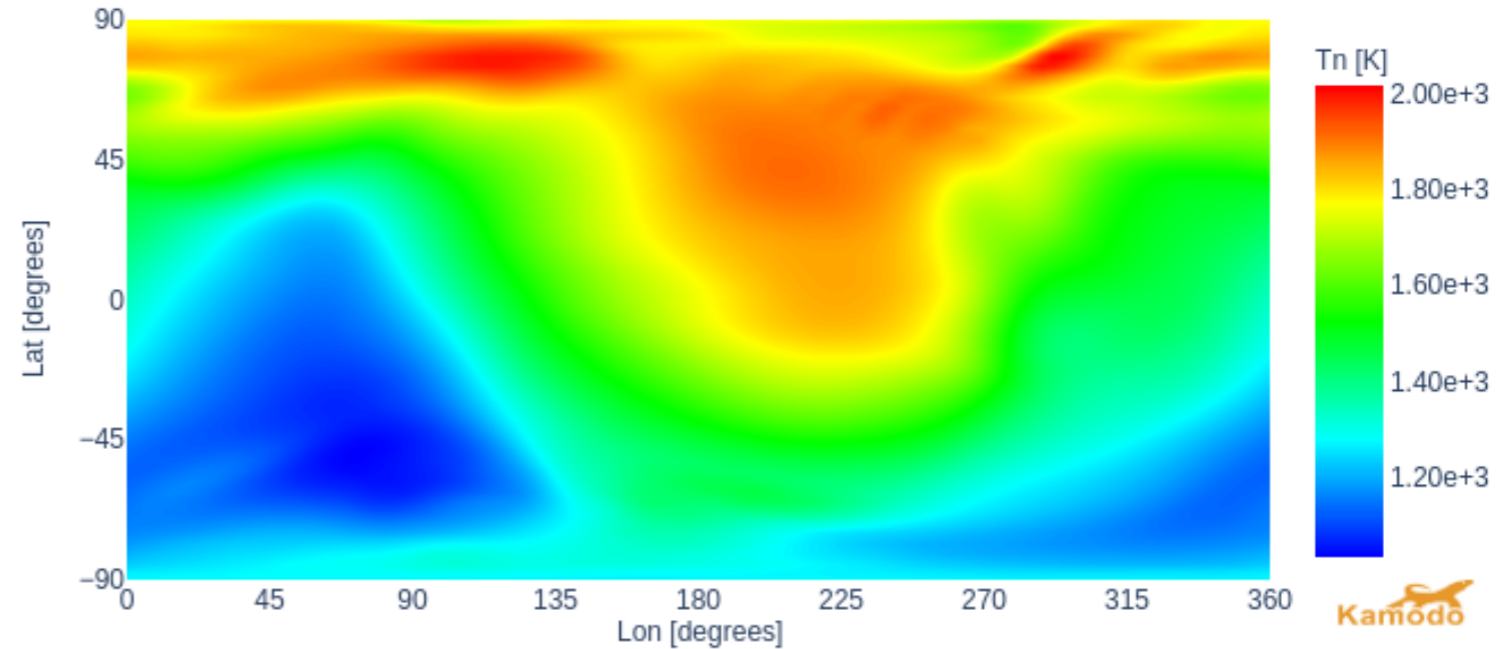


Kamodo Sample Analysis - Web demo

3D Plot, Time = 2005/04/12 12:00:00 UT



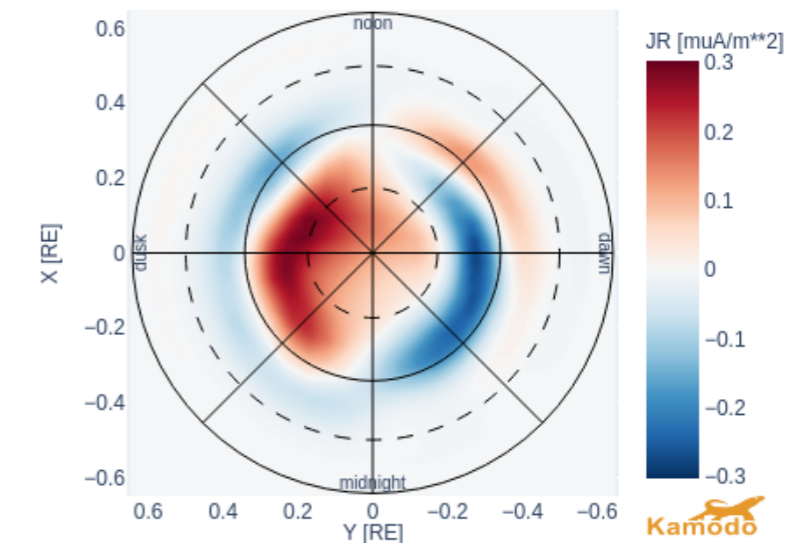
Altitude=400 km, Time = 2012/07/13 00:00:00 UT



Model: GITM v4.03, Run: Sophia_Schwalbe_062220_IT_4

: BATSRUS, Run: Wen_Meng_060920_1, 1007616 cells, minimum dx=0.125

Northern Hemisphere, Time = 2005/04/12 12:00:00 UT



Model: SWMF-IE, Run: Wen_Meng_060920_1

Model: GITM v4.03, Run: Sophia_Schwalbe_062220_IT_4
GITM values interpolated on grace1 trajectory

